

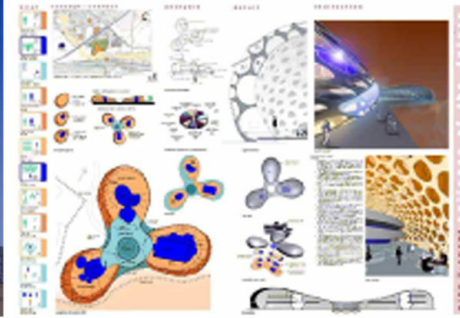
Built Pedagogy

Colleges of the Future, United Kingdom

Aedasstudio was awarded joint first prize in the Royal Institute of British Architects (RIBA) Learning Skills Council Forum (LSC) 'Colleges of the Future' competition.

The competition required conceptual designs for two new colleges; one in an urban area and the other in a rural setting, chosen from four possible scenarios.

Both projects set the college at the heart of contextual network within the landscape, and were designed to be highly flexible, capable of responding to the changing requirements of teaching methods & student expectations. In different ways the schemes utilise an inhabited, intelligent skin to interact with the environment and to engage with the realm of the public world.



Singapore Civic, Cultural & Retail Complex (CCRC)

Although not a centre for learning, the Singapore Civic, Cultural & Retail Complex is a unique and outstanding example of good architecture and a civic building that integrates seamlessly with the urban fabric. It demonstrates integrated design between the natural and built landscape in and around the building. The CCRC is used, in this case, as an analogy to Aedas's design approach.

Located at Vista Xchange precinct of one-north, Singapore, the 54,000m2 development comprises of cultural, civic & retail uses and when complete will provide a premier entertainment, lifestyle and retail experience for one-north and the wider Singapore community.

The design for the 24,000m2 retail space responds to the challenging site topography as the zone spirals inwards addressing the major entry points and culminates in an open amphitheatre. Its angular profile and formal curves are generated from a direct response to surrounding site potentials and advantages of sightlines, vistas, and circulatory patterns. The sheltered pathways and connectors act as public thoroughfares that create ideal civic spaces of interaction and sensory environment.

Above, a 40 meter high grand foyer creates a visual and spatial connection between the retail, civic and cultural zones. It also provides a canopy under which the public can experience outdoor entertainment and al-fresco dining while protected from the elements.

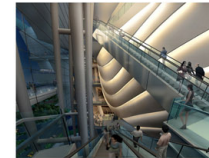
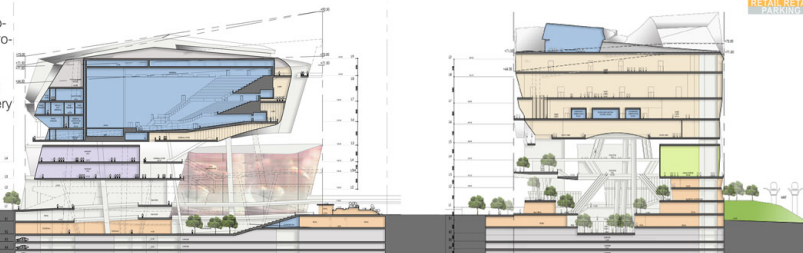
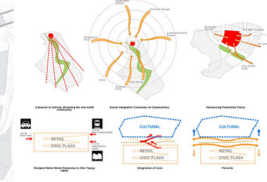
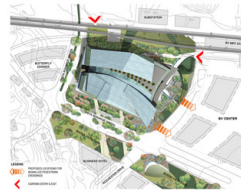
The façade of the ark-shaped Civic and Cultural zone is clad with honey-comb unfilled insulating glass panels that enable the building to glow and become a lighted box of inspiration. There is always constant visual dialogue and connections between the retail podium and the civic zone.

The focus of the cultural zone is a 5000 plus seat auditorium, which will be the largest venue of its kind in Singapore capable of staging amplified musicals, concerts and other large scale visual events.

The venue is supported with administration, artist and technical support, function spaces, lobbies and circulation spaces that make up the remainder of the 30,000m2 cultural and civic program.

The Concept Design is driven by the desire to blur the boundaries between retail and cultural zones and indoor and outdoor spaces with flowing spatial transitions that encourage discovery and deliver an energetic civic node serving one-north and beyond.

Project name: Civic, Cultural & Retail Complex
 Client: Rock Productions Pte Ltd
 Location: Vista Xchange, one-north, Singapore
 Date completed: 2011 (Tentative)
 GFA: 54,000m2
 Scope: New Build
 Project Value: Confidential



The Academic Environment

Xi'an Jiaotong-Liverpool University

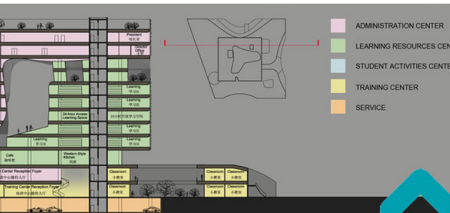
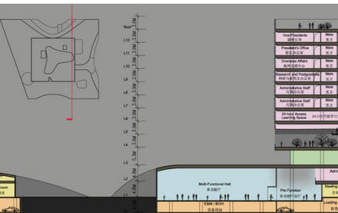
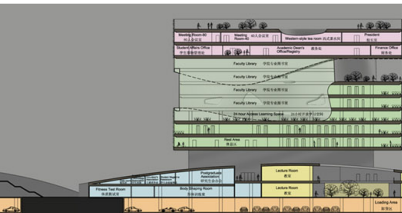
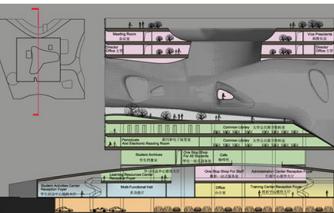
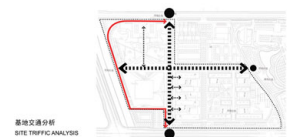
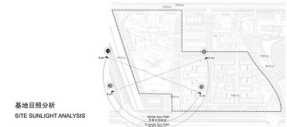
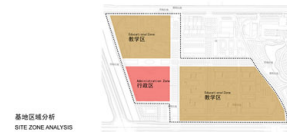
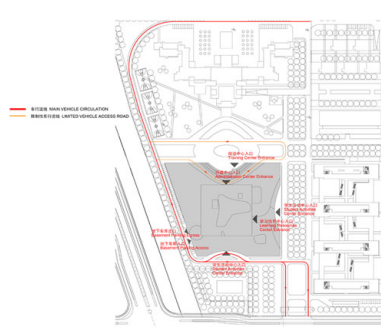
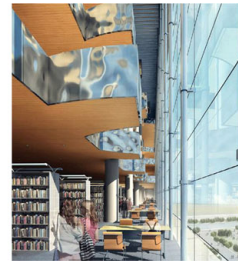
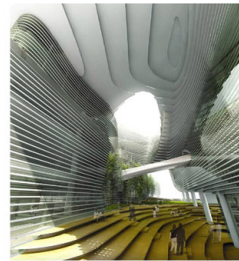
The Xi'an Jiaotong-Liverpool University Administration Information Building is located in the new University Campus of Suzhou. Fully integrated in the new Industrial Park of the city, this campus will host the most famous universities of China and abroad. The Xi'an Jiaotong-Liverpool University will be at the center of this new Campus and one of the main players. It will offer education and training in sciences, engineering and management. This campus is the direct result of the People's Republic of China Open Policy and Globalization of Education.

The building design concept is highly influence by the local culture of Suzhou and its famous gardens. In the traditional gardens of Suzhou you will always find the famous Scholar Stone. This limestone, eroded over time by wind and water, can be found on islands and along the shoreline surrounding the Taihu lake. Appreciate by Chinese scholars in the ancient time, this stone is an essential part of Chinese culture and is also referred as the Stone of Knowledge.

The building was first conceived as a solid block of 'lime stone'. Vantage points, sunlight and prevailing wind studies were carried out to determine the location and size of the volumes that were to be curved from this block. The final outcome and architecture of this 'lime stone' allows for cross-ventilation and natural light to penetrate deep into the building. The spaces within this block also provide a range of flexible spaces for quiet individual research and collaborative work between academics and students.

The building is in fact a modern interpretation of the traditional Chinese garden of Suzhou. Being the main building of this university, it will host a wide range of functions that need to be separated one from each other. The main functions are: the Administration Center with the high direction, the Learning and Resource Center, the Training Center and the Student Activities and Service Center.

Project name: Xi'an Jiaotong-Liverpool University Administration Information Building
 Client: Suzhou Industrial Park Education Development & Investment Company
 Location: Suzhou, PRC
 Gross floor area: 51,000sqm (above ground)



The Learning + Play Environment

Evangel College, Hong Kong

An example of a building that provides an outstanding teaching and learning environment for all staff and students is the Evangel College in Hong Kong. The building form of the secondary and primary schools reflects the concept of a

"ThroughTrain" school, which is to ensure the continuity of the primary and secondary Curriculum. Each school is in a Vform and the two Vforms connect to each other, so that a continuous chain of school accommodation is created in the result of a Zform. At the nodal junction of these two Vforms are the shared facilities between the primary and secondary schools, such as General Office, Library, Staff Room, etc.

Orientation

The North-South orientation is generally adopted at the very beginning of the design in order to make use of the optimal sunlight and sea breeze. The Architect's intention is that this will ultimately lead to certain cost saving for the school in the long term.

Interaction Spaces

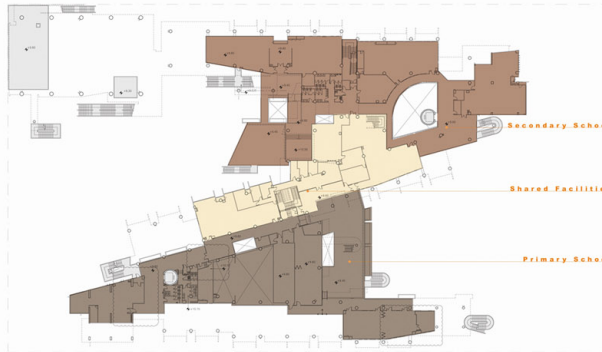
This setting helps to create a desirable micro climate for the stepping terraces, which is a vital element of the school design. Most of the classrooms are connected by terraces arranged in a stepping profile, which are considered as outdoor learning spaces. Hence, the traditional indoor learning environment is extended to the outdoor creating a range of formal and informal teaching and learning spaces. The stepping profile also enables the open spaces to be well separated for the use of students at various age groups, yet to a certain extent they are connected within the overall building form. All stepping terraces are different in shape, design of landscape and outdoor furniture also varies from primary to secondary section.

Natural Lighting

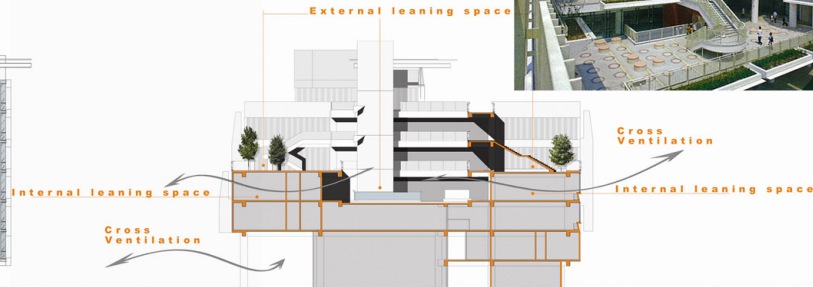
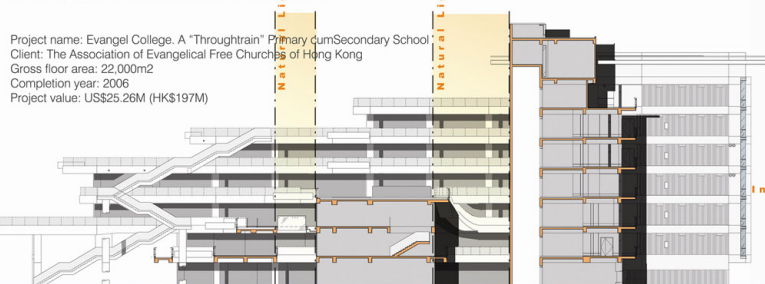
Natural lighting is used at strategic locations throughout the building to define the entrances to the different accommodation areas underneath. Skylights were provided at the stepping terraces in order to provide natural lighting for the accommodations or the public circulation areas underneath. The outdoor learning space readily convertible for different activities in this design encourages students' creativity through self exploration and collaboration.

Indoor Spaces

The classrooms, equipped with features to accommodate possible changes in teaching mode, also allows teachers to observe other teachers' tutorial so that they learn from each other. These interactive spatial planning strategies bond the student-student, teacher-student, teacher-teacher and teacher-parents relationship and help the whole school grow as a family. The design not only extended indoor learning space to outdoor, it also introduces the school itself to the public. The Assembly Hall of the Secondary School was pulled out from the teaching block in order to cater for use by the public at weekends or after school hours.



Project name: Evangel College, A "Throughtrain" Primary cum Secondary School
 Client: The Association of Evangelical Free Churches of Hong Kong
 Gross floor area: 22,000m²
 Completion year: 2006
 Project value: US\$25.26M (HK\$197M)



The Living Building

Holland Park School, United Kingdom

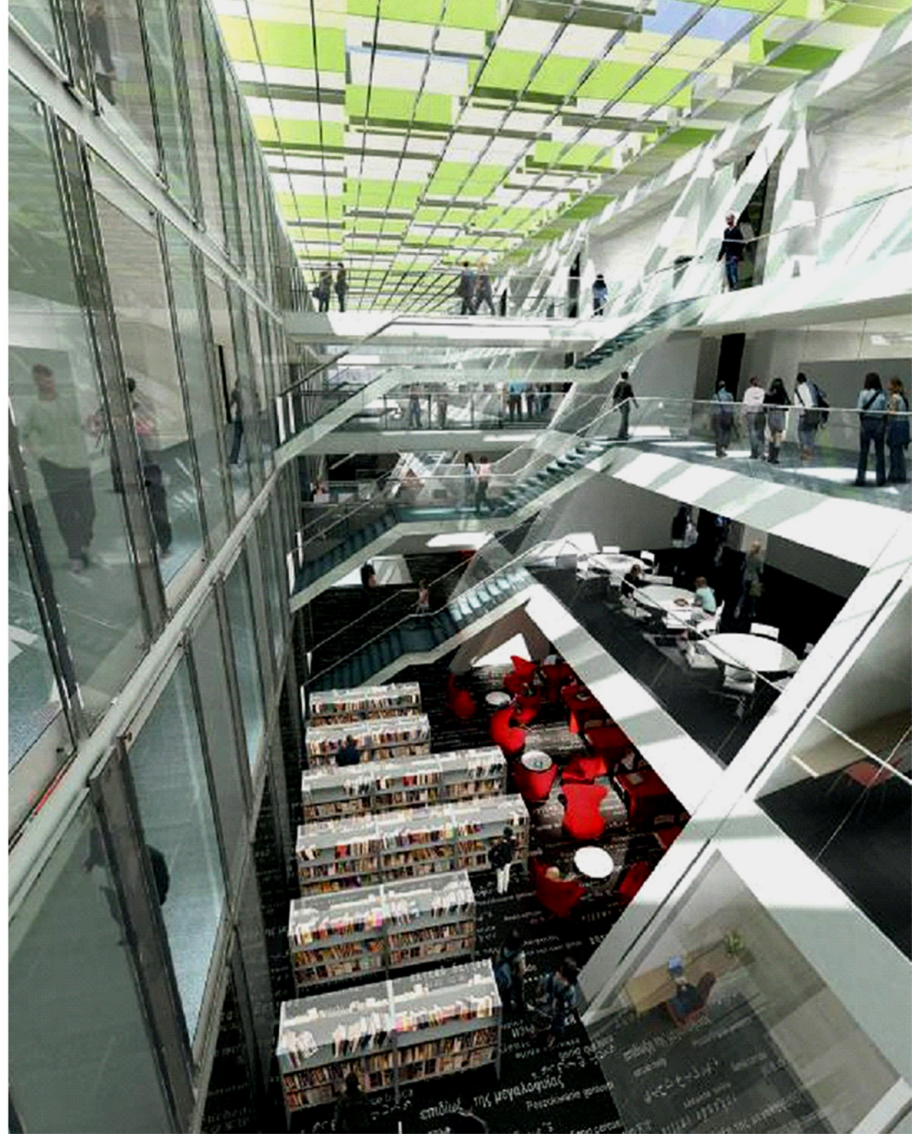
Holland Park School is a new 1500-place school in West London. Aedasstudio created a benchmark educational building with a fully inclusive learning environment. The Site for the Holland Park School is strategically located between Kensington and Notting Hill directly adjacent to Holland Park in this the Kensington Conservation Area.

Technology for sustainable design

The design for the new school building has been developed around a central atrium where student interaction and group discussions take place. The strength of the project is in its use of automated panels in the atrium ceiling that reflect and allow natural light to penetrate deep into the building. This helps to prevent glare and provide natural high-quality ambient lighting to the far reaches of the atrium. These movable panels move according to the shifting sun and create an ever-changing atrium roof while providing occupant comfort.

The school also has a range of flexible learning spaces, an integrated IT/ Learning Resource Centre and a 25(m) swimming pool.

Project name: Holland Park School
Client: London Borough of Kensington & Chelsea
Location: London, UK
Date completed: Summer 2008
Project value: £35m



Capability + Process

Capability

The case studies of Xi'An Jiaotong Liverpool University, Evangel College, Holland Park School, College of the Future and the Singapore Civic, Cultural and Retail Complex (CCRC) demonstrate Aedas's capability as an international practice with global presence to deliver and complete a project of equal size, scale, type and budget.

Although there are qualified Australian registered architects on staff, Aedas is proposing collaborating with local Australian firms and consultants to address issues with registration and liaising with relevant local boards and authorities. Many educational and civic projects in Aedas's portfolio are international and over the past years, Aedas has been widely recognized for its ability to realize buildings of complex form and geometry, and the implementation of Building Information Modelling (BIM) innovation. Aedas hopes to bring these specialities along with international perspective and design flare to this project.

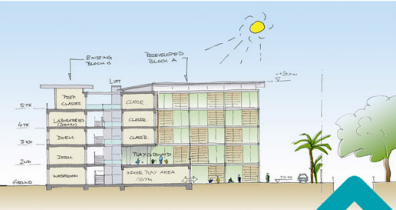
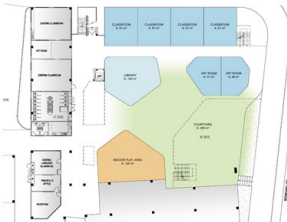
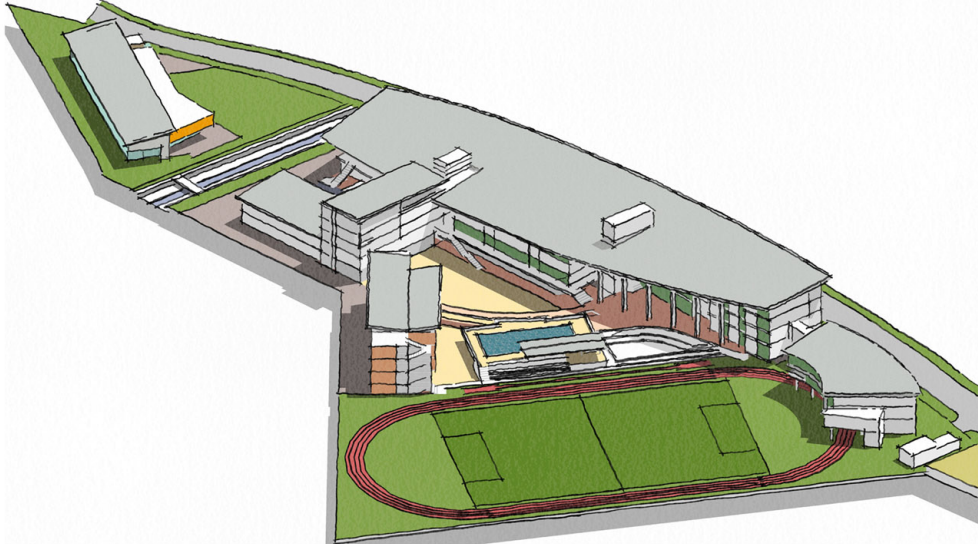


Working Methodology

As with complex buildings like the Singapore CCRC, Aedas will work with international consultants like Arup to explore viable yet innovative solutions to meet the expectations of our clients.

The upgrading and expansion of Lycée Français De Singapour (Singapore French School) is a brief example of how Aedas helps a client realize a project. The project comprises of expanding the building facilities of the Lycée Français de Singapour to cater for an anticipated increase in student numbers in a phased approach from currently 1000 students to approximately 1500 students by 2012. Particular consideration is given to the importance of construction and land costs, spatial relations, schedule and the impact on school operations, which have to continue during construction. Aedas assisted the client in meetings with the local land and planning authorities and examined existing building conditions. The scope includes infilling and additional block of classrooms and expanding the usage of adjacent areas.

Project name: Lycée Français Extension
 Client: Lycée Français De Singapour Ltd
 Gross floor area: N.A.
 Date completed: 2012
 Project value: S\$6.3 million



Merit

Aedas Award-Winning Projects in Asia

Aedas

The Assoc. of Evangelical Free Churches of HK
Evangel College - Through-train Primary & Secondary, Tsung Kwan O, Area 65, HK
HKSAR Government, Considerate Contractors Site Award 2005



DAMAC Properties, Ocean Heights, Dubai, UAE
Berley Design Award for Best Architecture 2005



Hongkong Land
The Centres of Central, HK
HKIA, Special Architectural Award - Accessibility 2006



MTRC
Disneyland Resort Line, Sunny Bay Station, HK
HKIA, Certificate of Merit 2006
Professional Green Building Council, Green Building Award - Grand Award 2006



Urban Land Institute
Urban Land Institute, USA

One Raffles Link, Singapore
Award for Excellence (Large-scale, Mixed Use Development) 2002
by the United States Urban Land Institute



Civil Aviation Authority of Singapore

Terminal One Chang International Airport, Singapore
1st Runner-Up for Terminal One Upgrading of the Chang International Airport Competition 2005
by the Civil Aviation Authority of Singapore



Sports Centre and Public Library, HK
HKIE, Special Commendation Awards 2005



DAMAC Properties, Ocean Heights 2, Dubai, UAE
CNBC, Arabian Property Award 2006, Best Architecture Award



Hongkong Land
York House, HK
HK-BEAM Society, Platinum Standard for Environmental Friendly Design and Function 2007



MTRC
Tsung Kwan O & Tiu Keng Leng Stations, HK
MTRC, Outstanding Implementation of Quality Systems 1998



Building and Construction Authority

Parakou Building, 120 Robinson Road, Singapore
BCA Universal Design Award 2007 (Commercial Building Category)
by Building and Construction Authority



Building and Construction Authority

313@Somerset, Singapore
BCA Green Mark Award (Platinum), 2008
by Building and Construction Authority



The Hong Kong Institute of Education Jockey Club Primary School at Tai Po, HK
HKIA, Medal of the Year 2002



DAMAC Properties, Oceanscape, Abu Dhabi, UAE
CNBC, Arabian Property Award 2006, Best Development Award



Hongkong Land
Chater House, HK
Quality Building Award, Certificate of Merit 2004
HK-BEAM Society, Quality Building Awards 2004
HKIE, Commendation Award 2003



MTRC
Lantau Airport Railway, Siu Ho Wan Depot, HK
MTRC, Outstanding Implementation of Quality Systems 1998



Building and Construction Authority

The Church of Jesus Christ of LDS, The Hong Kong Temple
HKIA, Certificate of Merit 1996



Trident International Holdings, The Pentominium, Dubai, UAE
CNBC, Arabian Property Award - Best Apartment, Best Development, Best Architecture, Best Property & Best High-rise Award 2007



J.V. of AIG, CapitalLand & Lai Sun Dev.
AIG Tower, HK
HK-BEAM Society, Excellence Rating for New Office Design 2005



KCRC
West Rail, Mei Foo Station, HK
British Construction Industry Awards - Winner of The International Category 2004



Building and Construction Authority

H.K.I. Development Co. Ltd., Beijing Fortune Plaza, PRC
Beijing Municipal Commission of Urban Planning, Bronze Medal 2003



Private Residence at Silverstrand, Sai Kung, HK
Perspective, Design Recognition Awards - Best Architectural Award 2006



West Kowloon Cultural Development, HK
MIPIM Architectural Review, Future Project Awards 2006
Cityscape Architectural Review Awards - Commendation in Masterplanning Category 2004



KCRC
West Rail, Nam Cheong Station, HK
British Construction Industry Awards - High Commendation in International Category 2004



Building and Construction Authority

Xiamen International Cruise Terminal, PRC
HKIA, Merit Award Outside HK 2007



LuoXi Residential Development, Guangzhou, PRC
Cityscape Architectural Review Awards - Commendation in Residential Category 2004



MTRC
Kowloon Station, The Elements, HK
MIPIM Asia, Shopping Centres Award 2007



KCRC
East Rail Extensions, Tai Wai Station, HK
HKIE, Special Commendation Awards 2005



Building and Construction Authority

